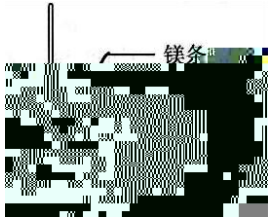
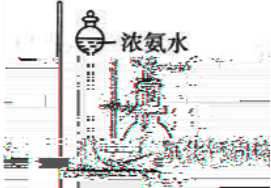
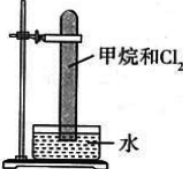



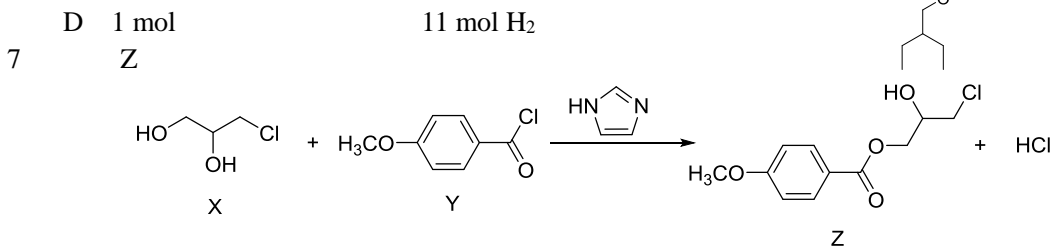
2021 届高三第一次联考

化学试题

2020 12 29 10:40 11:55 100 75

- H 1 C 12 N 14 O 16 K 39
10 2 20
- 1 2020 11 10909
5 1.7kg 14
- A ${}^3\text{He}$ ${}^4\text{He}$
- B 3 ${}^3_2\text{He}$ ${}^2_1\text{H}$ ${}^4_2\text{He}$ ${}^1_1\text{H}$ 18.4Mev
- C
- D
- 2
- A
- B
- C
- D
- 3 X Y Z W X Y X Y Z Y
- A X Y Z W X
- B X>Y>Z>W
- C X>Y>W>Z
- D Y>X>W>Z
- 4 C N S Cl
- A CH_4 NH_3 H_2S HCl NH_3
- B CS_2 SCl_2
- C S^2
- D CH_4 NH_3 H_2S CH_4

A		
B		Ca(OH)_2 $\text{NH}_3 \cdot 2\text{O}$
C		
D		CO

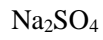


- X Y Z
- A X
- B Z
- C X C O
- D Y C

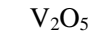
8

10%

- A
- B
- C
- D



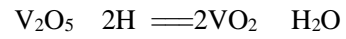
9



)



- A
- B
- C
- D



/



3 mol

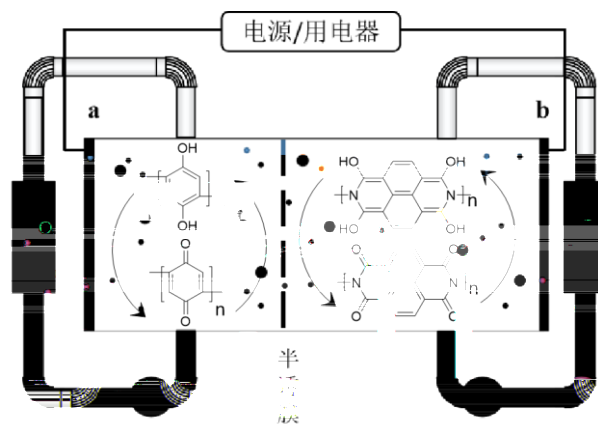


0.5 mol

10

1

2



1

- A.
- B.
- C.
- D.

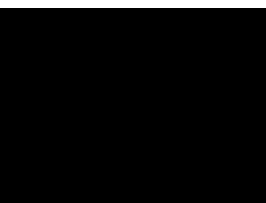
b

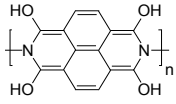
a

a

pH

b





$4n e^- + 4n H^+$

5

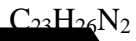
4

11

A	Cl_2		NO_3^-
B			KSCN
C	CH_3COONa	CH_3CH_2Cl	$NaNO_2$
D			

12

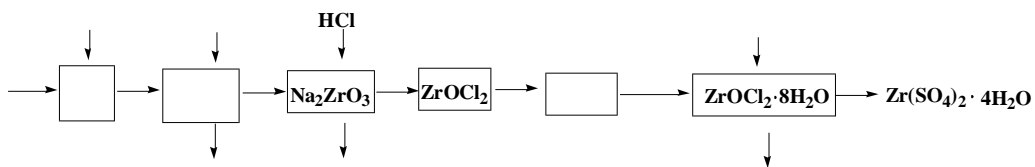
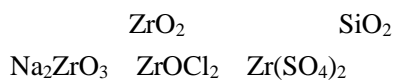
A



B

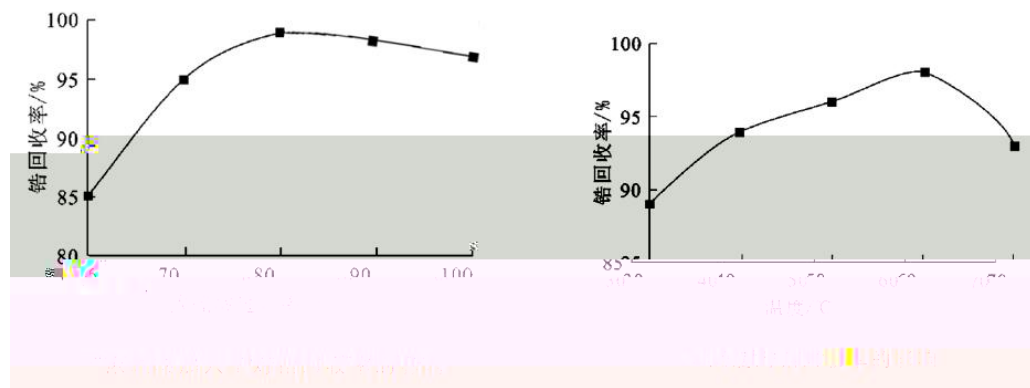
6





1 1 _____

2 4 ZrOCl₂



80%

50

3 ZrO₂

4 2 _____ 4 Zr(SO₄)₂·4H₂O

5 ZrOCl₂·8H₂O 800 _____ ZrO₂

17 15

Ag⁺

I

1 AgNO₃ KI
 1 mL 1 mol/L AgNO₃

1 mL 1 mol/L KI

2 Ag⁺

AgNO₃

Ag⁺
 K₃[Fe(CN)₆]

KSCN

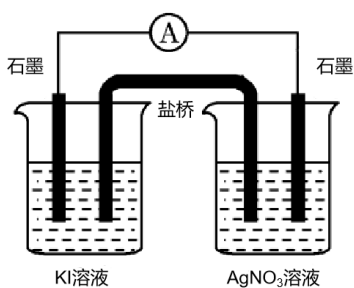
NaOH

KMnO₄

Ag ⁺	KSCN	Fe ³⁺
Ag ⁺	1~2	Fe ²⁺

Ag⁺ I
pH 5.50

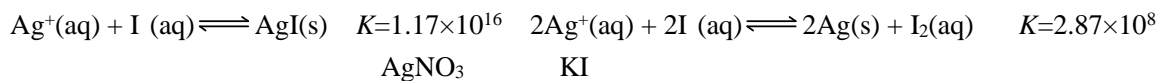
3 Ag⁺ I



(u)

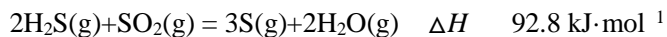
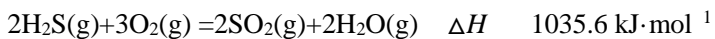
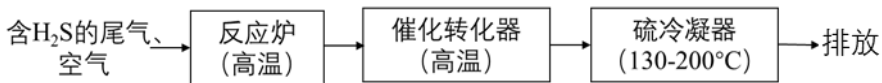
	$u \times 10^8 / \text{m}^2 \cdot \text{s}^{-1} \cdot \text{V}^{-1}$		$u \times 10^8 / \text{m}^2 \cdot \text{s}^{-1} \cdot \text{V}^{-1}$
Li ⁺	4.07	HCO ₃	4.61
Na ⁺	5.19	NO ₃	7.40
Ca ²⁺	6.59	Cl	7.91
K ⁺	7.62	SO ₄ ²⁻	8.27

4

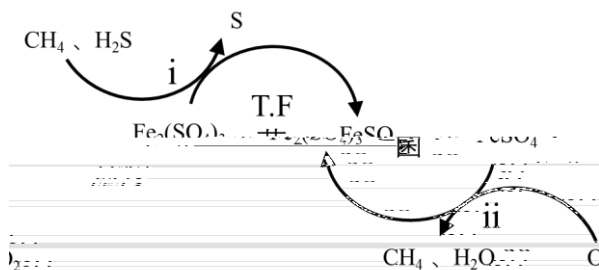


1

H₂S



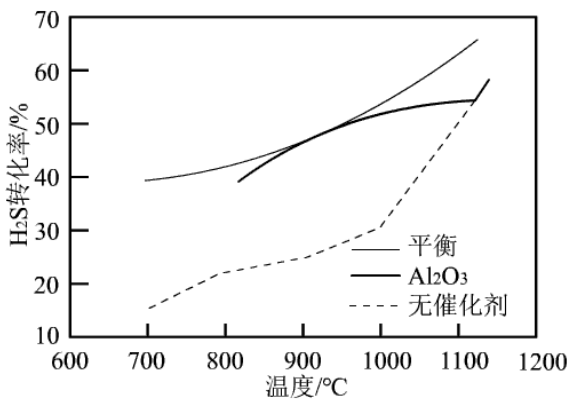
2 T.F



A Fe₂(SO₄)₃ B i pH
 C 2H₂S + O₂ = 2H₂O + 2S D

3 H₂S H₂S(g) ⇌ H₂(g) + 1/2 S₂(g) ΔH > 0 Al₂O₃ H₂S

H₂S



1100 °C Al₂O₃
 p T Al₂O₃ H₂S(g) Ar(g) 1 n
 H₂S(g) ⇌ H₂(g) + 1/2 S₂(g) S₂ Ar S₂
 K_p = _____ (= ×)

4

H₂S H₂CO₃

	K_{a1}	K_{a2}
H ₂ S	9.1×10^{-8}	1.1×10^{-12}
H ₂ CO ₃	4.3×10^{-7}	5.61×10^{-11}

H₂S

15

2

19

3

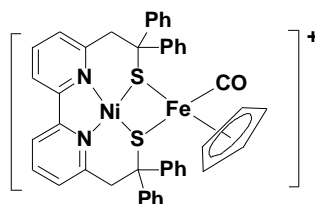
15

1 Ni²⁺ Fe²⁺

3 3

Ni²⁺

S



2 CsAuCl₃

CsCl·AuCl₂

2 1 1

Au

Cs

3

m

p

p

n

n

2m

$\frac{n}{m}$

SO₂

4

O₂

K

K

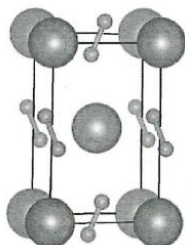
a pm

O

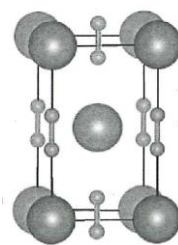
c pm

1

2



1



2

g/cm³ N_A

